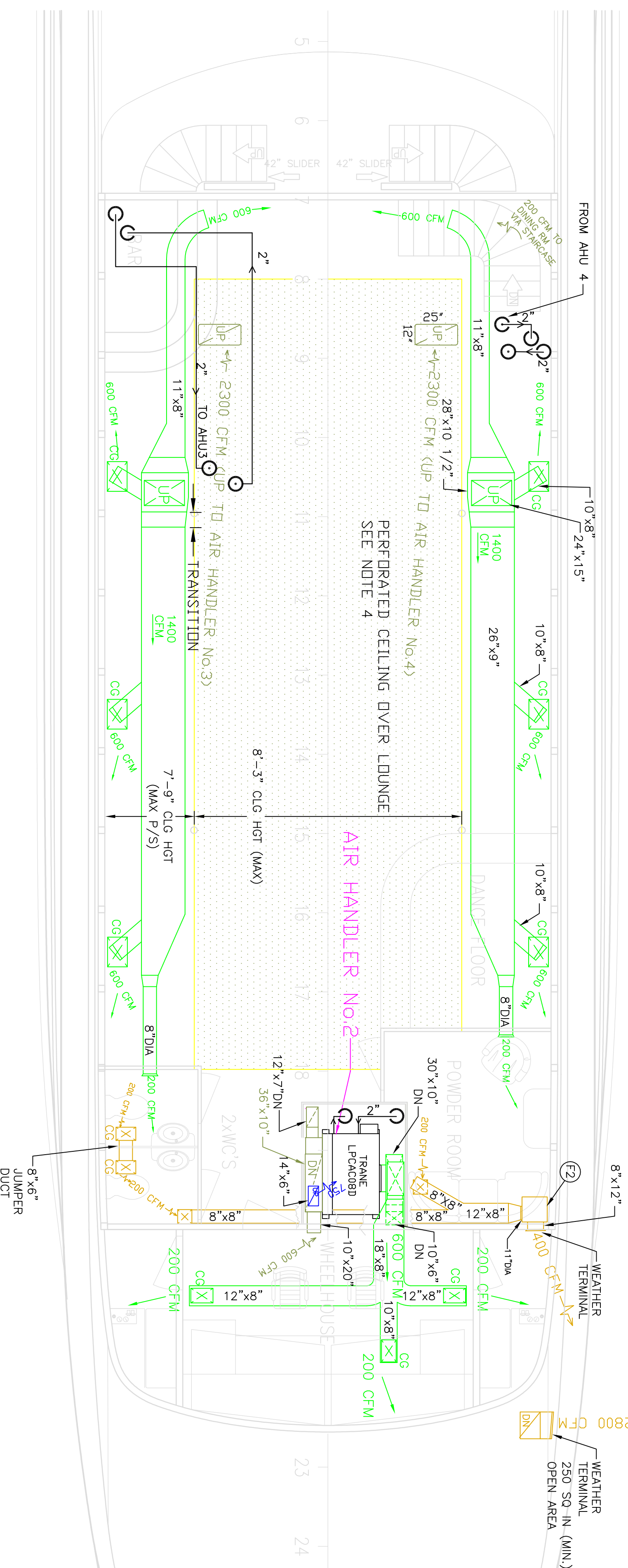


SKY DECK

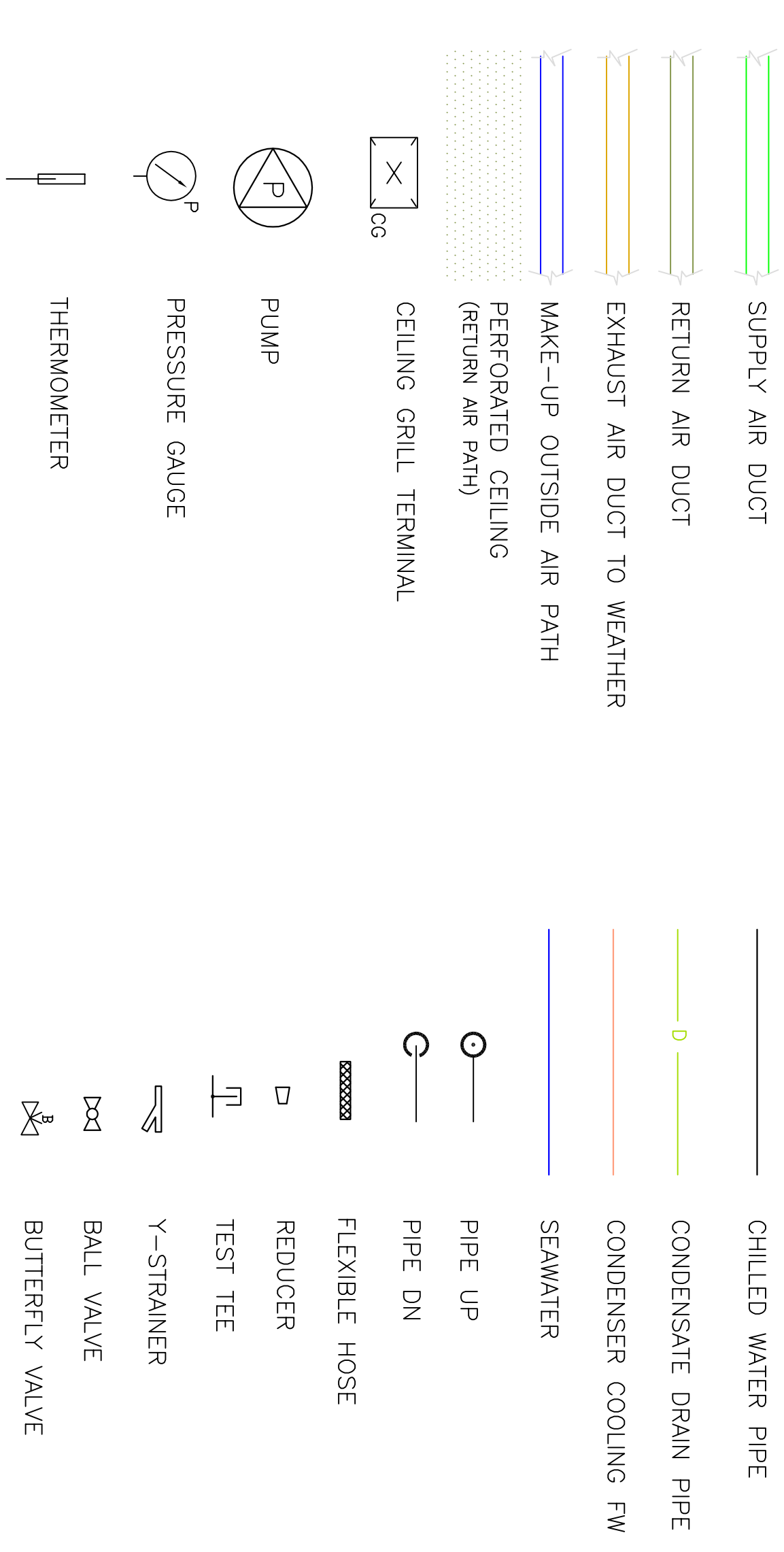


UPPER DECK

LIST OF AIR HANDLERS AND FANS

LOCATION	USE	SPECIFICATION	MOTOR	RATING	DESIGN FLOW RATE	DESIGN STATIC PRESS.	FAN RPM	REMARKS
AHU 1	GALLEY	TRANE LPCA08B	3 HP	191.710 BTU/HR	3200 CFM	2.77" W.G.	1369	CHILLED WATER AIR HANDLER VERTICAL w/FRONT TOP DISCHARGE
AHU 2	UPPER DECK, FWD DINING ROOM, GALLEY	TRANE LPCA08B	3 HP	191.710 BTU/HR	3200+ CFM	2.01" W.G.	1369	"
AHU 3	SKY DECK, STBD	TRANE LPCA08B	3 HP	169.210 BTU/HR	2600+ CFM	2.27" W.G.	1343	"
AHU 4	SKY DECK, PORT	TRANE LPCA08B	3 HP	169.210 BTU/HR	2600+ CFM	2.27" W.G.	1343	"
AHU 5	MAIN DECK, STBD	TRANE LPCA08B	5 HP	211.220 BTU/HR	3600 CFM	2.97" W.G.	1411	CHILLED WATER AIR HANDLER VERTICAL w/TOP BACK DISCHARGE
AHU 6	MAIN DECK, PORT	TRANE LPCA08B	5 HP	211.220 BTU/HR	3600 CFM	2.97" W.G.	1411	"
F1	GALLEY	DAYTON (GRANGER STOCK #7C049)	2 HP	2870 CFM @ SP=0.75" W.G.	2800 CFM	2.42" W.G.	1890	DRAWS THROUGH GAYLORD GREASE EXTRACTION HOODS, BELT-DRIVE, CENTRIFUGAL, 115VAC, 60 HZ
F2	POWDER ROOM	DAYTON (GRANGER STOCK #7C553)	1/4 HP	462 CFM @ SP=0.75" W.G.	400 CFM		1725	DIRECT-DRIVE, CENTRIFUGAL, 115VAC, 60HZ
F3	MAIN DECK HEADS, STBD	DAYTON (GRANGER STOCK #7C552)	1/6 HP	334 CFM @ SP=0.5" W.G.	200 CFM		1725	DIRECT-DRIVE, CENTRIFUGAL, 115VAC, 60HZ
F4	MAIN DECK HEADS, PORT	DAYTON (GRANGER STOCK #7C552)	1/6 HP	334 CFM @ SP=0.5" W.G.	200 CFM		1725	DIRECT-DRIVE, CENTRIFUGAL, 115VAC, 60HZ

LEGEND



The information contained in this drawing has been prepared and reviewed by me and is certified as complying with U.S. Coast Guard regulations 146 CFR Subchapter T, specifically 172.202(b)(3)(iii).

REFERENCES

- One2Three Pty Ltd DWG No. 0534-0001G 130 FT MONOHULL
- Goyford Industries DWG No. 06-1122 (6/29/06)

REVISIONS

REV	DESCRIPTION	DATE	BY
A	1. ADDED GAYLORD HOOD w/INCREASED EXH FLOW, ADJUSTED FRESH AIR INFLOW VOLUMES THROUGHOUT SHIP TO SUIT 2. REVISED DUCT SIZES. REVISED AIR HANDLER, FAN, AND PIPE TABULAR INFO. 3. ADDED NOTES 18-20.	4/7/06	AW
B	1. DOWN-SIZED CHILLER, AHU Nos. 1,2,3,4, AND FANS F2, F3, F4. 2. REDUCED COOLING WATER FLOW RATES AND AIR FLOWS. 3. CHANGED WATER PUMP MODEL. 4. CHANGED WATER PUMP'S FROM PAIRED OPERATION TO SINGLE PUMP OPERATION w/SECOND PUMP STAND-BY. 5. CHANGED CONDENSER WATER PIPING SIZE. 6. CHANGED NOTE 3, ADDED NOTE 21.	7/3/06	AW
C	1. CHANGED MODEL AND ORIENTATION OF AHU 3 & 4 AND ASSOCIATED DUCTWORK.	8/3/06	AW

AIR CONDITIONING SYSTEM DUCTS & PIPING

ALAN WINKLEY NAVAL ARCHITECTURE, LLC
 1367 Jacobsen Boulevard
 Bremerton, Washington 98310
 (360) 373-8361



FOR ISLAND BOATS INC.
 SCALE 1/4" = 1'-0"
 DATE MARCH 29, 2006
 DRAWN BY ALAN WINKLEY, P.E.

DWG No. **3606-3** REV **C** SHEET **1/3**