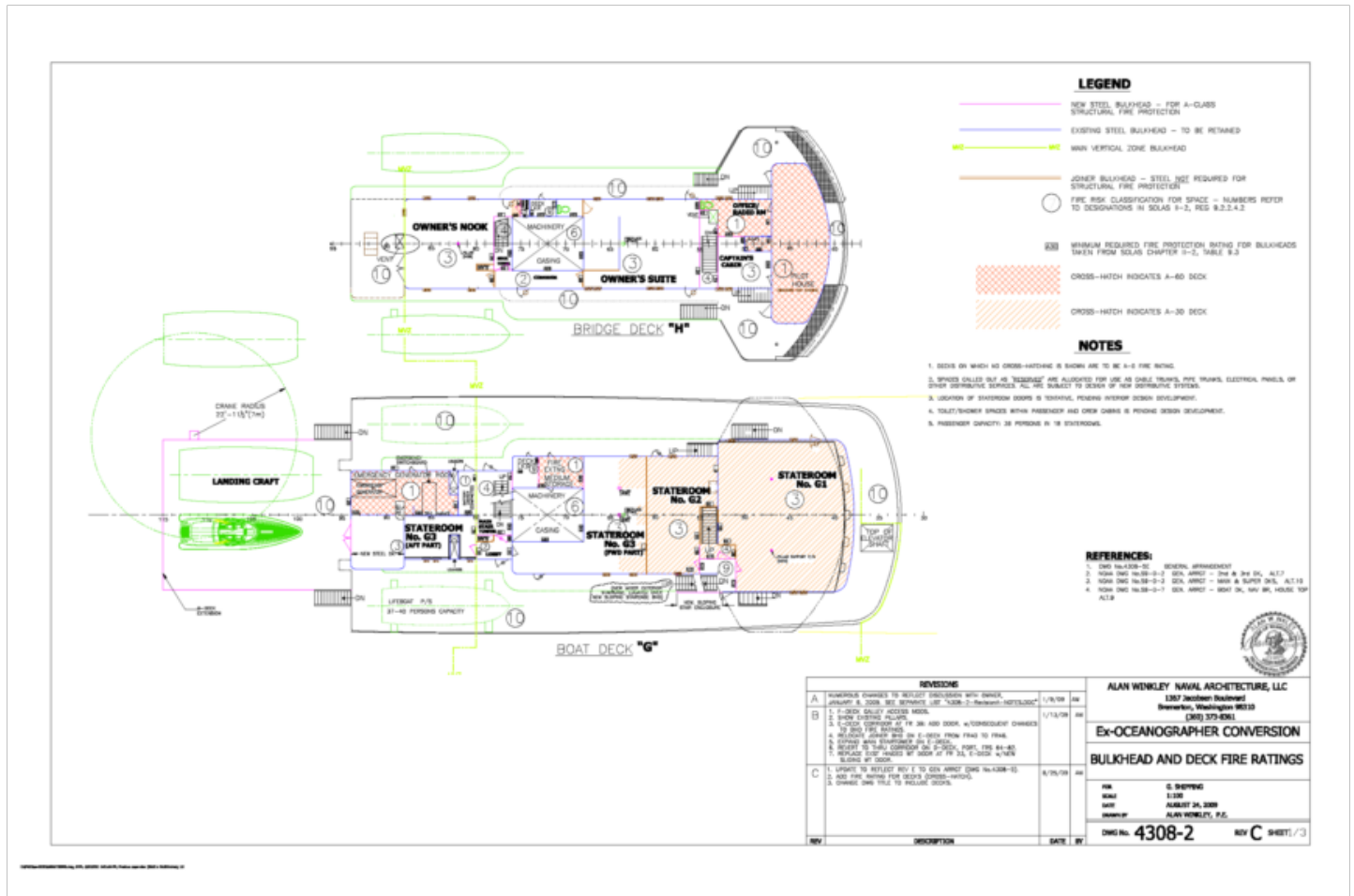


Research vessel conversion to cruise ship

This project entailed the conversion of a 300' oceanographic research vessel to a small cruise ship for a European entrepreneur. Alan, working closely with the owner, prepared a mostly-new interior layout for the ship, incorporating large lounge and entertainment areas and much larger staterooms and suites. As a SOLAS passenger ship, the conversion must comply with stringent IMO fire safety regulations. A sample of the fire ratings for bulkheads (for two decks only) is shown in the drawing below.



Another sample drawing (a "key plan" for steel structural modifications) is shown below.

