

NOTES

1. STEEL PLATE AND SHAPES TO BE ASTM A-36, OR ELSE ABS GRADES A, B, D, OR E. ALUMINUM SHAPES TO BE ALLOY 6601-T6.
2. WELDING SHALL BE IN COMPLIANCE WITH AMERICAN WELDING SOCIETY AND SUBJECT TO APPROVAL OF INTERNATIONAL REGISTRY OF SHIPPING (SHIP'S CLASSIFICATION SOCIETY). ALL WELDING SHALL BE CONTINUOUS.
3. PROVIDE SNIPES AND LIMBER HOLES FOR PROPER WELD ACCESS AND CONTINUITY.
4. GRIND SMOOTH SHARP CORNERS AND ROUGH EDGES LIABLE TO CAUSE INJURY OR DAMAGE.
5. SURFACE PREPARATION AND PAINTING SHALL BE AS DIRECTED BY OWNER'S PROJECT MANAGER.
6. STAINLESS STEEL NUTS AT BOLTED CONNECTIONS OF MAST LOWER END TO "CRADLE" ARE FOR PURPOSE OF FIRMLY CENTERING THE MAST WITHIN THE CRADLE, TO PREVENT SIDE FORCE ON CYLINDER ROD SEALS WHILE AT SEA. BOLTED CONNECTION SHOULD BE FASTENED IN PLACE WHENEVER MAST IS IN UPRIGHT (NORMAL) POSITION. MUST UNFASTEN THE BOLTED CONNECTION BEFORE LOWERING THE MAST.
7. WELD 4" x 3/8" FLAT BAR TABS TO "CRADLE" AFTER MAST IS INSTALLED, WITH MAST LOWER PIN CONNECTION PINNED IN PLACE, AND CRADLE ALIGNED SO THAT MAST COMPRESSES NEOPRENE PAD FIRMLY AND EVENLY.
8. TRIM TOP EDGE OF FASCIA PLATE IN WAY OF BASE STRUCTURE, AS NEEDED, TO FACILITATE WELDING.
9. ACCESS OPENING ON STARBOARD SIDE OF SHROUD TO BE 56" x 26" NOMINAL SIZE. ACCESS OPENING IS FRAMED BY ANGLE BARS AS SHOWN ON SHT 7. ACCESS COVER PLATE (55" x 25" NOMINAL) MAY BE EITHER 10 GA SHEET OR 3/16" PLATE.
10. FASTEN ACCESS COVER PLATE TO PERIPHERAL ANGLE BAR FRAME, USING No. 10 MACHINE SCREWS (APPROX 6) AND NUTS. TACK WELD THE NUTS TO INNER LEG OF ANGLE BARS.
11. EACH HYDRAULIC HOSE TO BE 1/2" ID, PRESSURE RATED FOR 2500 PSIG (MINIMUM), WITH 1/2" NPTF END FITTINGS. LENGTH APPROXIMATELY 10 FEET.
12. CLOSE-COUPLE THE PILOT-TO-OPEN CHECK VALVE (PC No. 6 ON SHT 8) TO ROD END CYLINDER PORT. INTERCONNECTING LENGTH OF 1/2" SCHED 80 PIPE SHOULD NOT EXCEED 2".
13. WHERE PIPE (NOT HOSE) IS INDICATED ON SHT 8, IT SHALL BE CARBON STEEL, BLACK, ASTM A-53, SCHED 80.
14. HYDRAULIC SYSTEM INSTALLATION AND FILTRATION SHALL ACHIEVE SYSTEM CLEANLINESS OF SAE CLASS 4, OR CLEANER.
15. HYDRAULIC FLUID MUST BE COMPATIBLE WITH ALL COMPONENTS (PUMP, CYLINDER, VALVES, HOSE).
16. DIMENSIONS SHOWN IN "KEY PROFILE" (SHEET 5) ARE CRITICAL. DIMENSIONS OF SHROUD ARE NOT CRITICAL.
17. ELECTRICAL CABLES AND CONDUIT NOT SHOWN.

CONTENTS

- SHT 1 NOTES
- SHT 2 ALUMINUM MAST
- SHT 3 MOUNTING DETAILS - CYLINDER FIXED END
- SHT 4 CRADLE FOR MAST LOWER END SECURING
- SHT 5 FULCRUM BRACKET CONNECTION - MAST TO STRUCTURE
- SHT 6 SKELETAL STRUCTURE - STEEL SUPPORT
- SHT 7 STEEL SHROUD
- SHT 8 HYDRAULICS

REFERENCES:

1. P-SERIES, ULTIMA STEEL HAND PUMPS, ENERPAC (FILE: "P SeriesUltima Cat pages.pdf"), www.enerpac.com.
2. TOA PAGING HORN SPEAKER, "horn sc615t sa1e.pdf".
3. SPECO TECHNOLOGIES, "htint59k spec.pdf".

REVISIONS

REV	DESCRIPTION	DATE	BY
A	ADD PADS FOR CCTV & SPKR. REMOVE ARM.	4/21/16	AW

ALAN WINKLEY NAVAL ARCHITECTURE, LLC
 1367 Jacobsen Boulevard
 Bremerton, Washington 98310
 (360) 373-8361

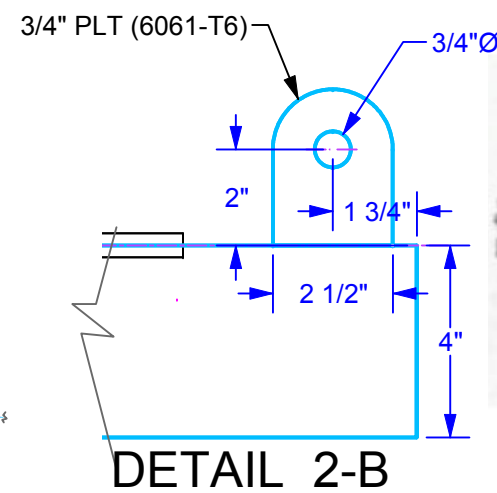
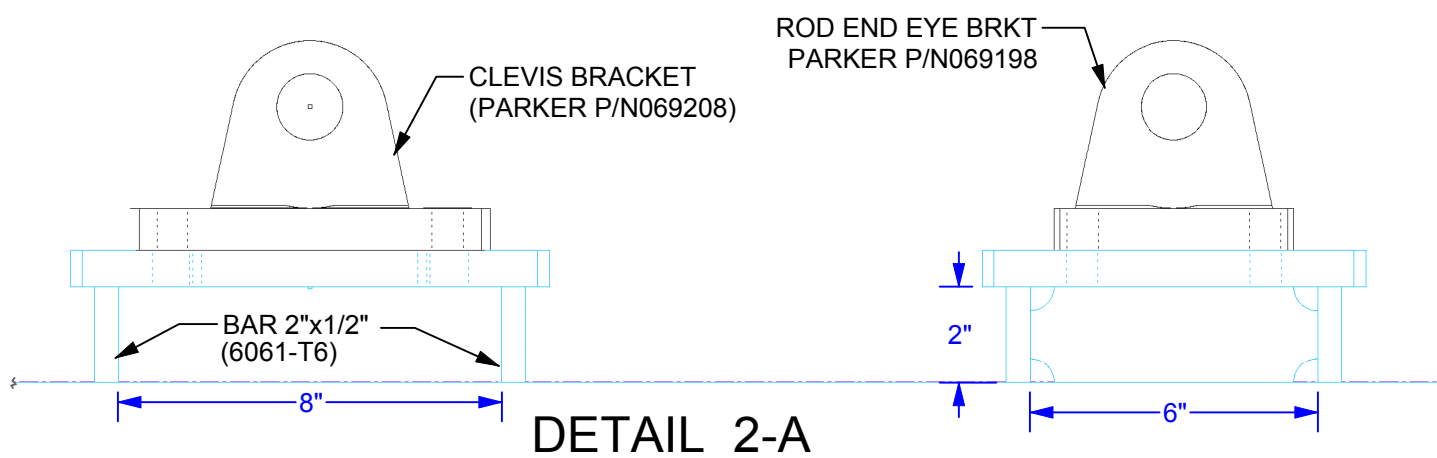
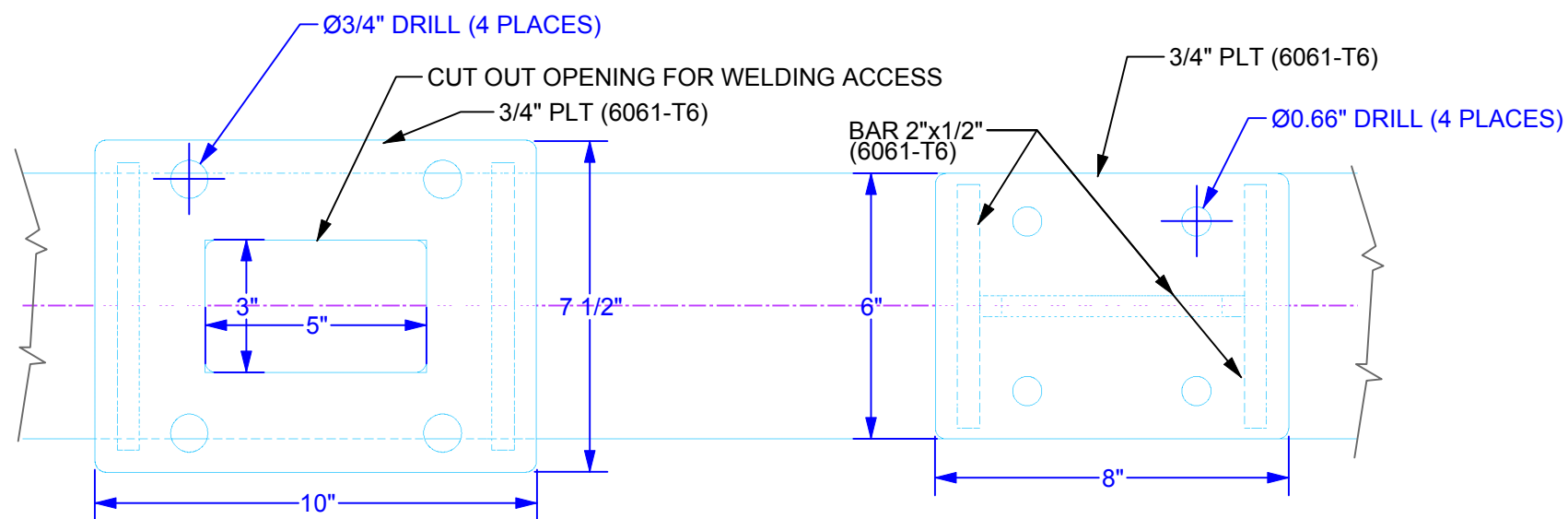
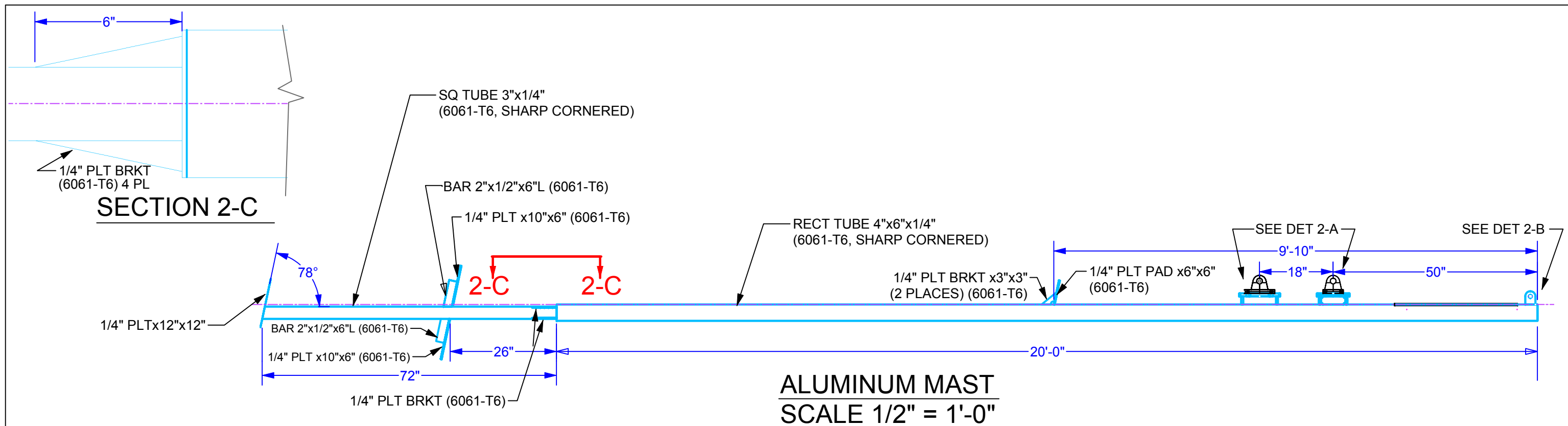
SAFARI VOYAGER

AFT MAST ADDITION

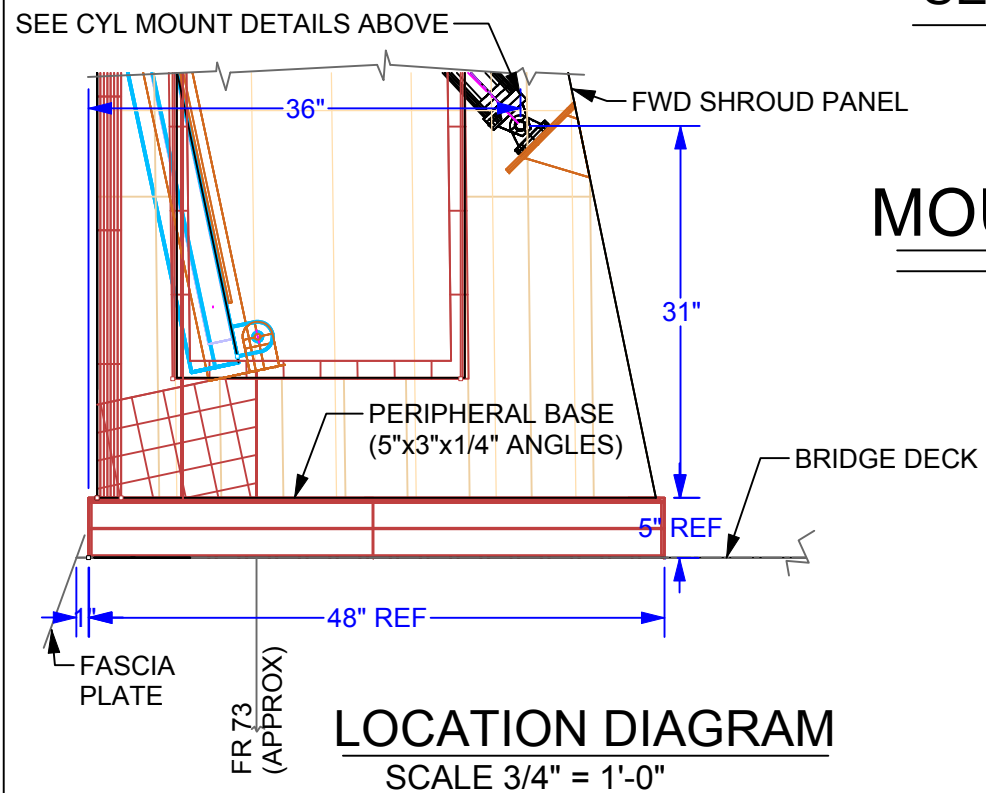
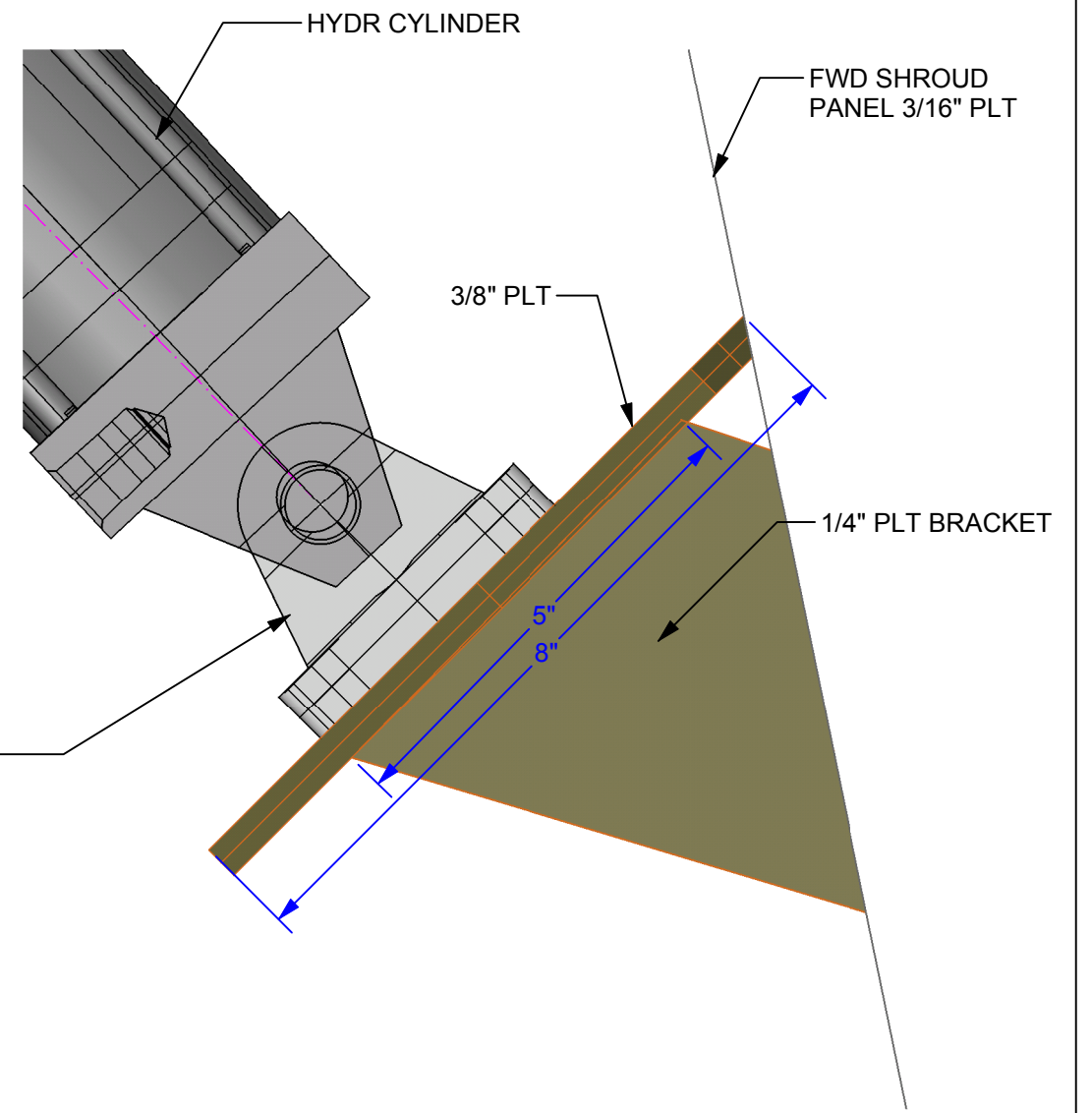
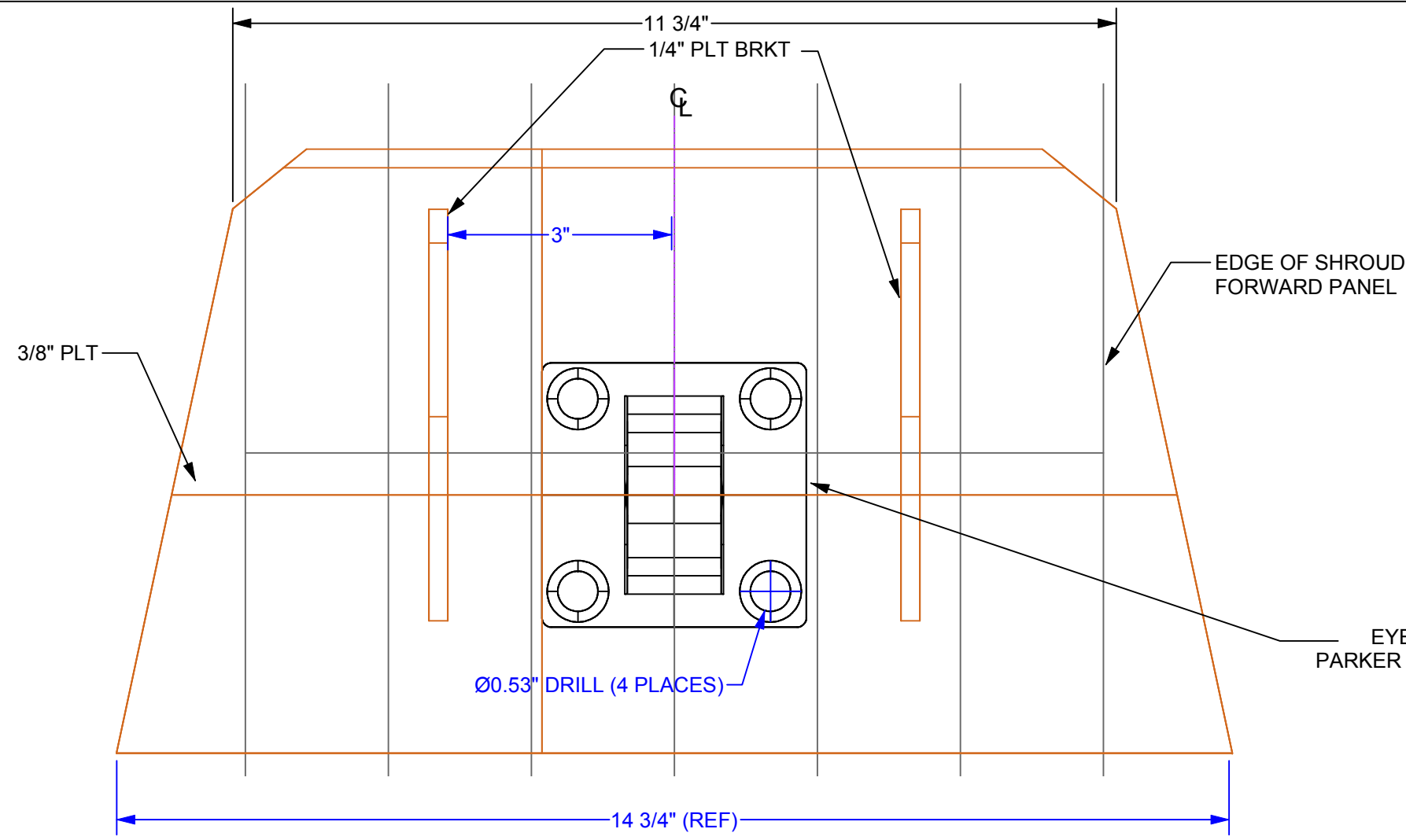
FOR INNERSEA DISCOVERIES LLC
 SCALE AS NOTED
 DATE APRIL 2, 2016
 DRAWN BY AW

DRAWING No. **6016-2** REV **A** SHEET 1/8





ALAN WINKLEY NAVAL ARCHITECTURE, LLC 1367 Jacobsen Boulevard Bremerton, Washington 98310 (360) 373-8361	
SAFARI VOYAGER	
AFT MAST ADDITION	
FOR SCALE DATE DRAWN BY	INNERSEA DISCOVERIES LLC 3" = 1'-0", EXCEPT AS NOTED APRIL 2, 2016 AW
DRAWING No. 6016-2 REV A SHEET 2/8	



MOUNTING DETAILS - CYLINDER FIXED END

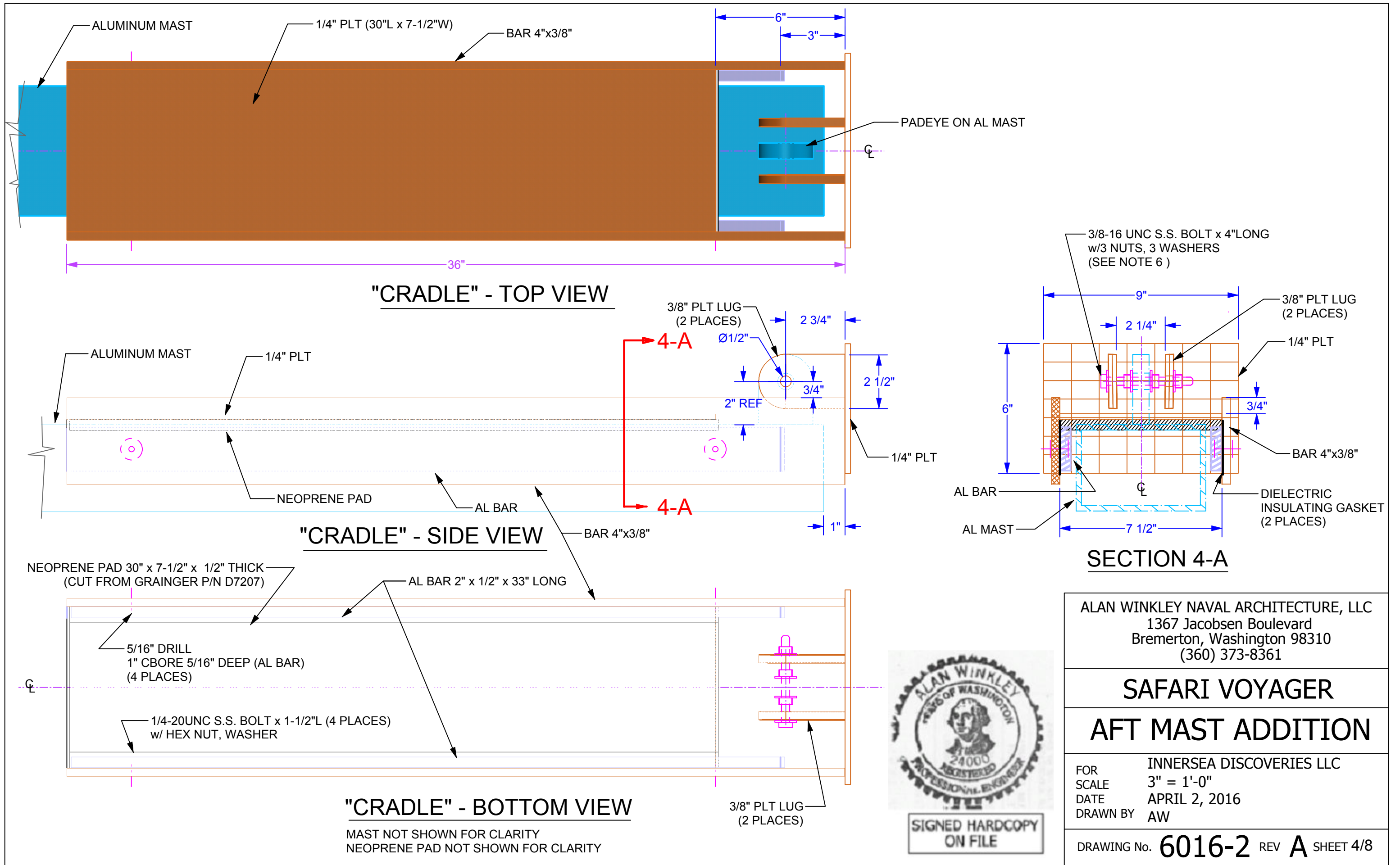


ALAN WINKLEY NAVAL ARCHITECTURE, LLC
 1367 Jacobsen Boulevard
 Bremerton, Washington 98310
 (360) 373-8361

SAFARI VOYAGER AFT MAST ADDITION

FOR SCALE: INNERSEA DISCOVERIES LLC
 DATE: HALF SIZE, EXCEPT AS NOTED
 APRIL 2, 2016
 DRAWN BY: AW

DRAWING No. **6016-2** REV **A** SHEET 3/8

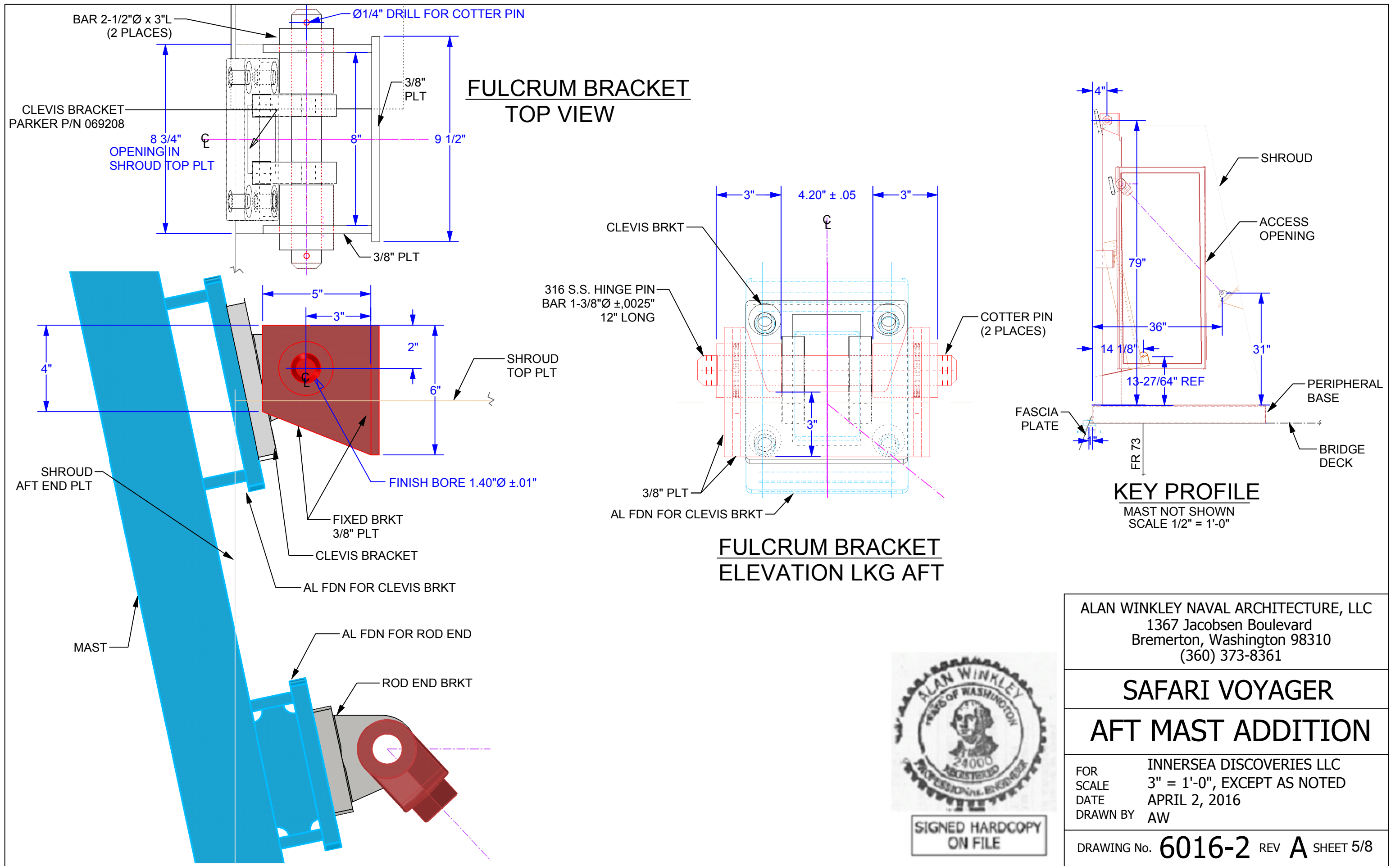


ALAN WINKLEY NAVAL ARCHITECTURE, LLC
 1367 Jacobsen Boulevard
 Bremerton, Washington 98310
 (360) 373-8361

SAFARI VOYAGER
AFT MAST ADDITION

FOR INNERSEA DISCOVERIES LLC
 SCALE 3" = 1'-0"
 DATE APRIL 2, 2016
 DRAWN BY AW

DRAWING No. **6016-2** REV **A** SHEET 4/8



ALAN WINKLEY NAVAL ARCHITECTURE, LLC
 1367 Jacobsen Boulevard
 Bremerton, Washington 98310
 (360) 373-8361

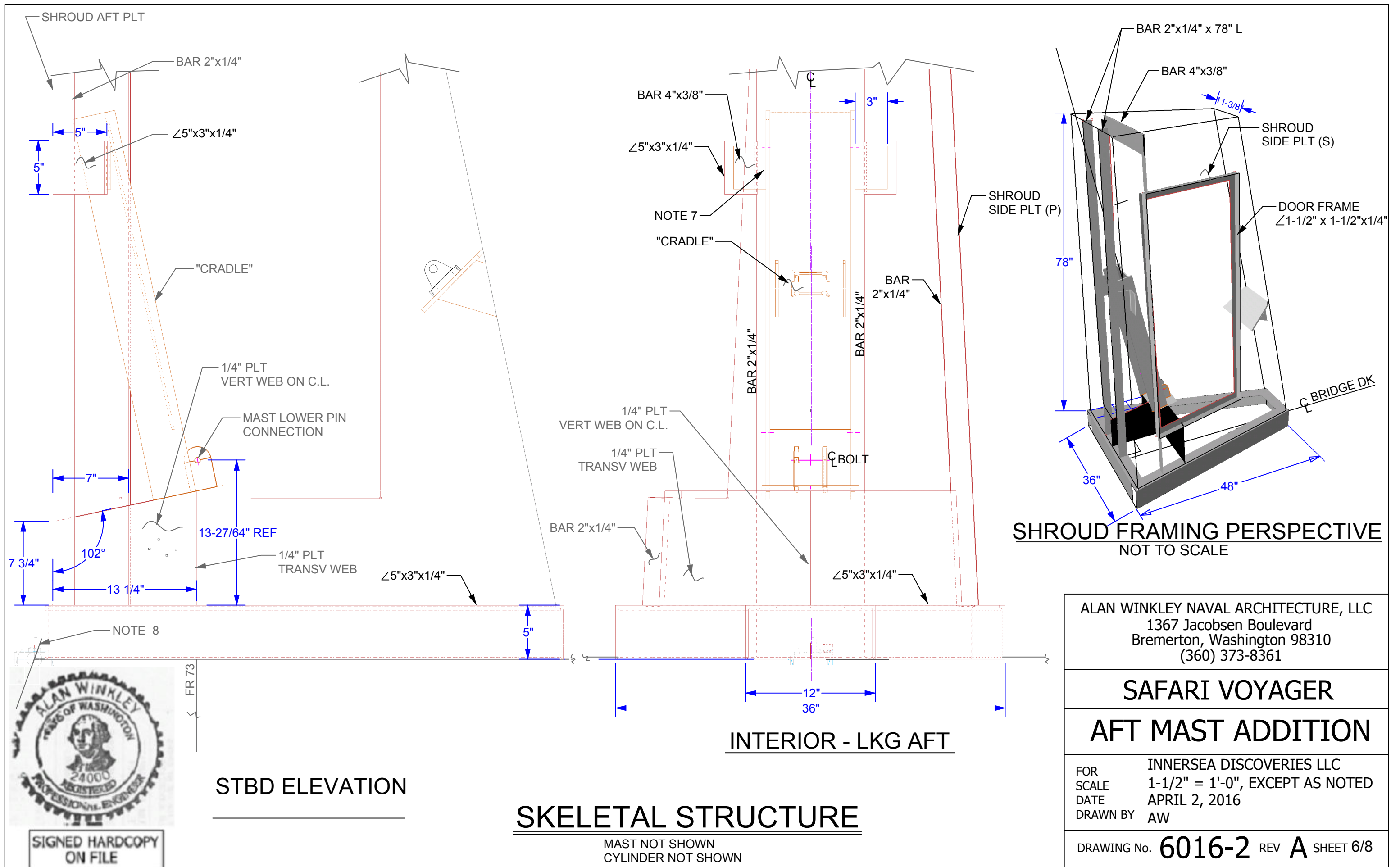
SAFARI VOYAGER

AFT MAST ADDITION

FOR INNERSEA DISCOVERIES LLC
 SCALE 3" = 1'-0", EXCEPT AS NOTED
 DATE APRIL 2, 2016
 DRAWN BY AW

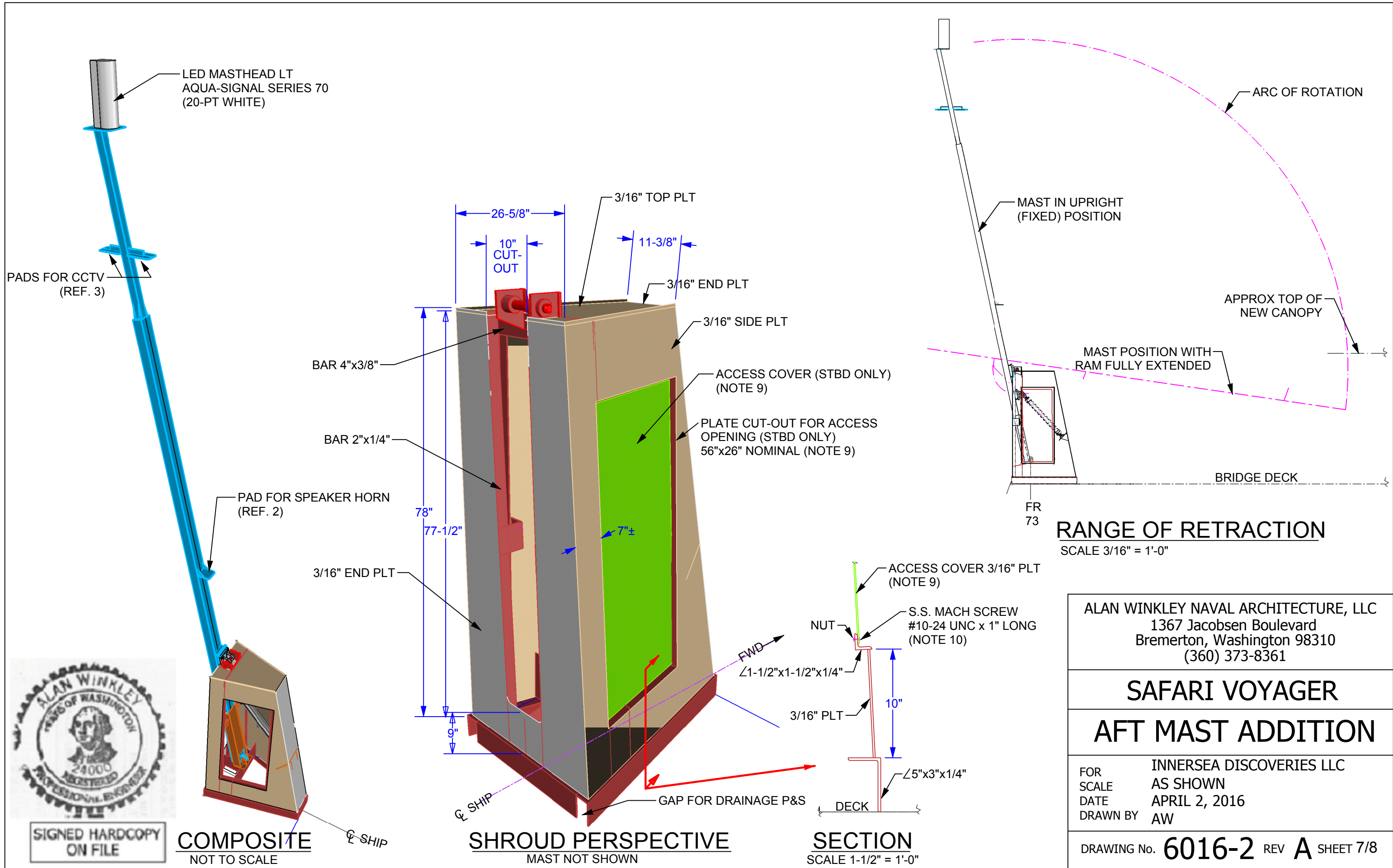
DRAWING No. **6016-2** REV **A** SHEET 5/8





SIGNED HARDCOPY ON FILE

ALAN WINKLEY NAVAL ARCHITECTURE, LLC 1367 Jacobsen Boulevard Bremerton, Washington 98310 (360) 373-8361	
SAFARI VOYAGER	
AFT MAST ADDITION	
FOR SCALE	INNERSEA DISCOVERIES LLC
DATE	1-1/2" = 1'-0", EXCEPT AS NOTED
DRAWN BY	APRIL 2, 2016
	AW
DRAWING No. 6016-2 REV A SHEET 6/8	

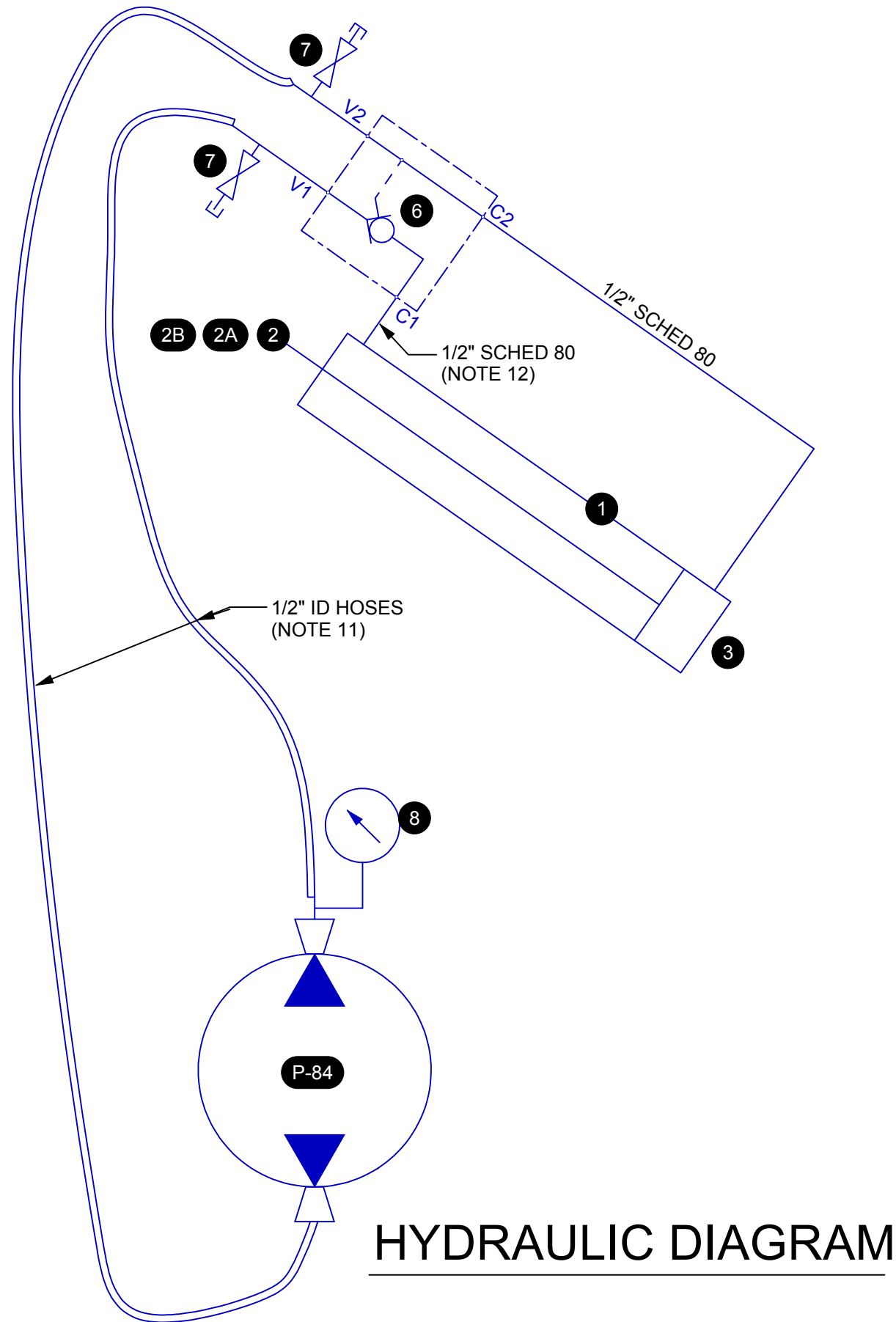


SIGNED HARDCOPY
ON FILE

ALAN WINKLEY NAVAL ARCHITECTURE, LLC 1367 Jacobsen Boulevard Bremerton, Washington 98310 (360) 373-8361	
SAFARI VOYAGER	
AFT MAST ADDITION	
FOR SCALE DATE DRAWN BY	INNERSEA DISCOVERIES LLC AS SHOWN APRIL 2, 2016 AW
DRAWING No. 6016-2 REV A SHEET 7/8	

HYDRAULIC EQUIPMENT LIST

ITEM	MAKER	PART NO.	REMARKS	
1	HYDRAULIC CYLINDER	PARKER	3.25BB3LLU44A30.000	3.25" BORE, 1.75" ROD DIA, 30" STROKE INCLUDES PIN FOR CAP END FIXED CLEVIS.
2	ROD END CLEVIS	PARKER	050945	1.375" DIA PIN, 1.25"-12 THREADS
2A	EYE BRACKET	PARKER	069198	ATTACH ROD END CLEVIS TO MAST
2B	PIN	PARKER	068371	ATTACH ROD END CLEVIS TO MAST
3	EYE BRACKET	PARKER	069196	ATTACH CYL CAP END TO SHIP
P-84	MANUAL PUMP	ENERPAC	P-84	10,000 PSIG PRESSURE RATING; WORKING PRESSURE TO RAISE MAST = 700 PSI +/- SET INTERNAL RELIEF VALVE TO 1000 PSI.
4	CLEVIS BRACKET	PARKER	069208	ATTACH MAST TO STRUCTURE (NOT PART OF HYDRAULIC SYSTEM)
6	PILOT-TO-OPEN CHECK VALVE	SUN	CKEC LAN-ZTX	CLOSE COUPLE TO ROD END CYL PORT. 3:1 PILOT RATIO; 4 PSI CRACKING PRESS.
7	SHUT-OFF VALVE		1/4" NOM. SIZE	USE FOR PURGING AIR FROM CYL AND HOSES (NORMALLY CLOSED)
8	PRESSURE GAUGE			RANGE 2000 PSI



ALAN WINKLEY NAVAL ARCHITECTURE, LLC
 1367 Jacobsen Boulevard
 Bremerton, Washington 98310
 (360) 373-8361

SAFARI VOYAGER AFT MAST ADDITION

FOR INNERSEA DISCOVERIES LLC
 SCALE NONE
 DATE APRIL 2, 2016
 DRAWN BY AW

DRAWING No. **6016-2** REV **A** SHEET 8/8

